



Lambeth

FUTURE LAMBETH

Growing
Our

GREEN
ECONOMY

FUTURE LAMBETH

CONTENTS

- 05. **Foreword**
- 07. **Introduction**
- 12. **Lambeth's Green Economy**
- 24. **Our Vision**
- 30. **Our Plan**

Lambeth
is
proud
to
be
a
leader

Foreword

Lambeth is proud to be a leader in addressing the transition to net zero. As the first local authority in London to declare a climate emergency, we moved swiftly to convene a Citizens' Assembly and share learning from our communities to create a Climate Action Plan that will support our vision to become net zero by 2030.

We are already embedding a focus on sustainability across all council services. But now, we want to ensure that we are creating the right environment for the green economy to thrive locally, harnessing the opportunities the sector presents us in driving innovation, high-quality, well-paid jobs for our residents, and more liveable neighbourhoods.

Lambeth is proudly home to a thriving green economy - from ground-breaking, high growth SMEs in Sustainable Workspaces – Europe's largest incubator for sustainable business – to established scale-ups and a wealth of climate action and innovation led by our civic and community sector.

Now is the time for the council to bring targeted interventions to support the green economy with climate justice and equity at the heart. Through specialist business support, access to the right space, and upskilling our diverse residents with net-zero skills, we will help this flourishing economy to attract investment and grow.

That's why we've created our Green Economy Growth Strategy. The future of Lambeth's economy is sustainable and inclusive. This strategy outlines our ambitions for supporting the sector over the next few years.

Councillor Claire Holland
Leader of the Council





in addressing the transition to Net Zero.

Introduction

The green economy is seeing ever increasing investment as the impacts of climate change become more visible across the globe. The UK's low carbon and environmental goods and services sector was worth £205.7 billion to the UK's economy in 2020/21^[1]. Incorporating over 75,700 businesses and more than 1.2 million employees, the sector has grown year on year from 2007. This demonstrates the scale of opportunity presented by the green economy and the potential to enable growth through investment in activities that seek to reduce the impacts of climate change. Putting in place a strategy to support the green economy naturally aligns with the Lambeth Climate Action Plan enabling us to track the sector's reach and growth in a meaningful way as we strive to become net zero by 2030.



London is a world leader for climate action, with the capital's **growing low carbon sector worth £40 billion**. As the infographic illustrates, green economy activities already make a significant contribution to London's economy compared to the more traditional construction and manufacturing sectors.

Local government is uniquely positioned to accelerate growth in the sector. We can mobilise our assets, coordinate networks around shared missions, provide opportunities to translate research and ideas into practical solutions, and invest in the sector through workspace and business support opportunities.



Lambeth's Borough Plan 2030 outlines the council's commitment to embed justice, equity and diversity throughout the path to NetZero.

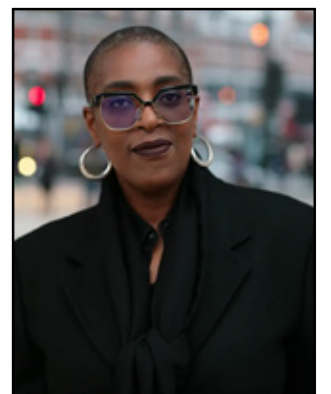
We want Lambeth to be the leading borough for the green economy within London and across the UK, which is why we are publishing a Green Economy Growth Strategy.

We're aligning our strategy to the [GLA's Green New Deal mission](#)^[2] which will create new jobs and skills for Londoners by doubling the size of London's green economy by 2030. Putting the environment at the centre of the city's recovery is a chance to reverse the ongoing economic downturn. [Lambeth's Borough Plan 2030](#)^[3] outlines the council's commitment to embed justice, equity, and diversity throughout the path to net zero, providing a clear mission for how we grow the green economy. The sector will bring new investment to the borough, help businesses to see long-term growth, and provide quality, skilled, local jobs.

This strategy brings together insights and expertise from academic research, company data analysis, and interviews with a broad spectrum of stakeholders from the sector. During the development of the strategy we tested the levers in reach of local government with these stakeholders to understand how we can best unlock and capitalise on opportunities for change. The actions in this strategy have been developed in collaboration with Lambeth's green economy stakeholders. This partnership will continue through delivery as we tap into the wealth of knowledge, capacity and ingenuity that already thrives within our businesses, institutions and communities.

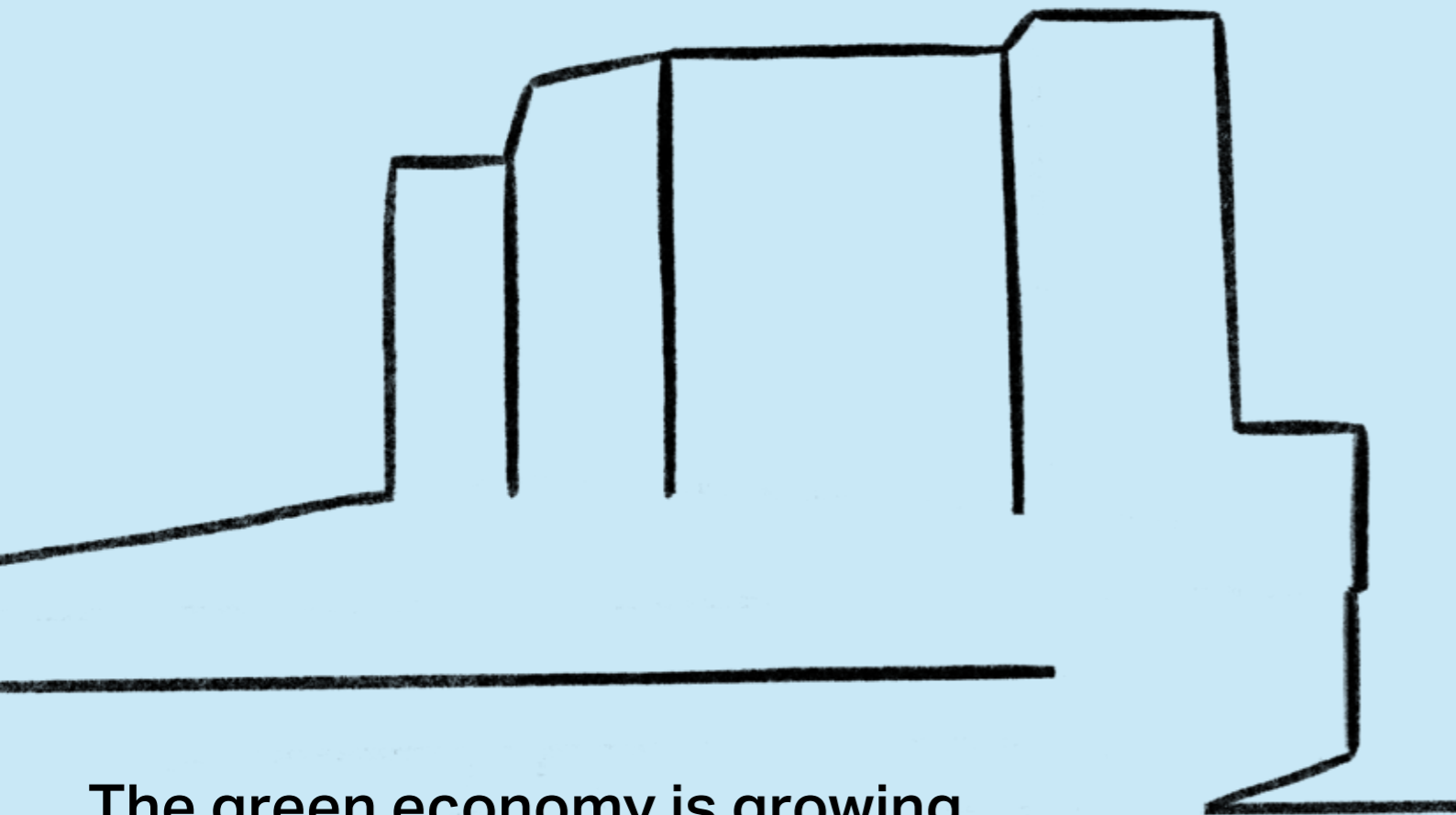
“Through the launch of the Green Economy Growth Strategy, Lambeth Council is embracing an historic opportunity to pave the way towards a sustainable and inclusive future. This strategy will unlock new possibilities for innovation, economic resilience, and equitable prosperity in Lambeth.

Through the delivery of the Green Economy Growth Strategy, we will continue to support a fast-growing and inclusive green economy in Lambeth. This strategy will also encourage inward investment in sustainable technologies and green infrastructure, propelling us towards a more resilient and just economy.”



Councillor Jacqui Dyer
Cabinet Member for Inclusive Economy and Equalities

Lambeth's Green Economy



The green economy is growing. By targeting our support for the sector on goal-orientated policy and interventions that prioritise areas of greatest potential of CO₂eq reduction, we can ensure that Lambeth benefits from this growth.

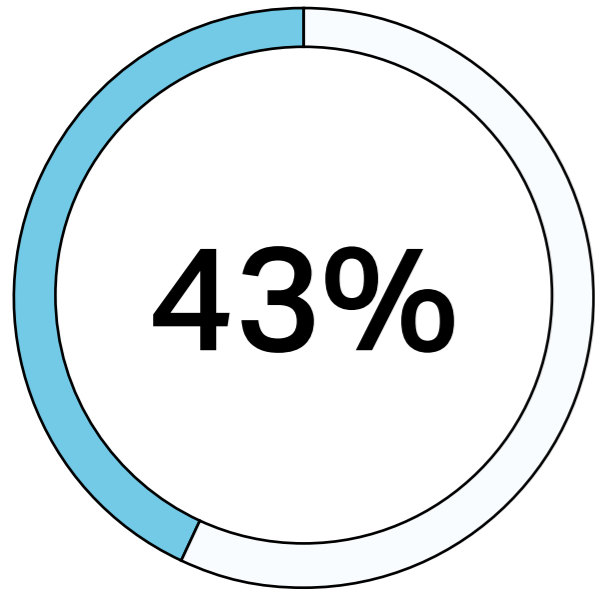
The green economy incorporates a diverse range of activities, including green finance, renewable energy, clean technologies, and sustainable construction practices. Taking our cue from national and regional government's definition of the green economy, we will measure its development and benchmark our impact against the sector as a whole.

In 2020/21 Lambeth's green economy was made up of 348 companies and employed 6,263 people across the sector. This sector makes up around 2% of the total Lambeth market in terms of companies, employees, and total sales.

We want Lambeth's green economy to excel at unlocking investment and deploying innovation towards activities that also support our ambitious Climate Action Plan. Lambeth is already home to Europe's largest green tech and climate tech incubator at Sustainable Ventures with over 500 startups active in their support ecosystem. This cluster of cleantech firms is innovating and investing in the areas of greatest potential for emissions reduction^[4] including car-free living, buildings refurbishment, heat pumps installation, and the increasing use of renewable electricity. In simple terms, Lambeth can become net zero by halving these major sources of emissions alone, meaning that the targeted support identified through this strategy will help us secure benefits for both the economy and the climate.

The green economy also has enormous potential in generating high quality, living wage jobs in our communities. It is crucial that as we support growth in the sector, ensure that these jobs and skills are equitably accessed throughout our borough, and that businesses are representative of our diverse communities.

Economic inclusion is not just vital for the health of our communities. Research shows^[5], that companies with diverse teams see at least 36% better financial returns than their competitors, and Lambeth's local talent provides businesses with the greatest potential to diversify as they grow. Significant long-term commitment is therefore needed from our businesses and institutions to bridge the current gap in representation in the green economy.



of Lambeth's population^[6] is Black, Asian or Multi-Ethnic.

Only 3.1%

of environment professionals identify as ethnic minorities.

Source: IEMA, 2021^[7]

3,000

Number of people needed to be employed full-time on retrofit to reach net zero in our buildings by 2030.

Source: Parity Projects, 2021^[9]

79%

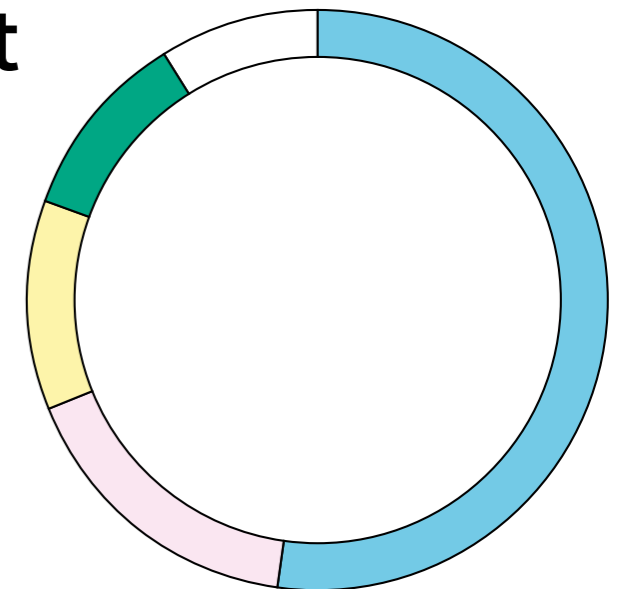
of top UK's top energy companies have no women occupying executive board seats.

Source: PwC, 2021^[8]

5 Fold Increase

Number of green jobs projected to rise from 147,000 in 2020 to 732,000 in 2050.

Four sectors account for 91% of central London's total green jobs by 2050.



● Green Finance ○ Power ● Low Carbon Transport ● Homes & Buildings

Source: Central London Forward, 2022^[10]

Lambeth is already rich with green innovation.



Images:
Mark Field Photography
Gorm Ashurst

Seeding Europe's largest cluster of green businesses

Launched in 2020, Lambeth's Future Workspace Fund is making loan and grant investments to grow the supply of affordable and supportive workspaces across the borough. The fund aims to stimulate high value cluster growth and inward investment in innovation-led sectors, support economic recovery, and attract and generate new business growth and employment opportunities for residents.



Sustainable Ventures is the UK's leading incubator of early stage cleantech businesses, leading London's shift towards a low-carbon economy, and have already developed Europe's largest sustainability cluster in the heart of our borough in Waterloo. The companies within the cluster operate in energy, mobility, building technology, circular economy and food and agritech.

Funded by the Future Workspace Fund, Sustainable Ventures has transformed 45,000 sq. ft of unused space in County Hall into supportive and affordable workspace and in turn benefitting over 150 businesses per year and supporting 750 jobs at any one time. By investing in one of the major hubs of cleantech innovation in Europe, Lambeth are leading the way in catalysing the growth of the green economy.

Sustainable Ventures have so far supported 435 start-ups and more than 4,100 jobs across South London and raised over £750 million in investment nationally. Their ecosystem of low carbon innovators brings a rich pool of talent who will continue to place Lambeth at the forefront of the new green economy.



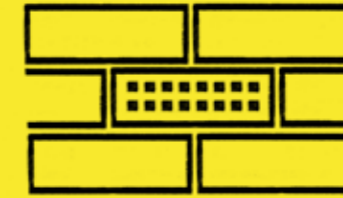
FUTURE LAMBETH

Image: Mark Field Photography

A diverse range of Lambeth's businesses and organisations are already seeding a rich green economy for the borough.

AirEx

Sustainable brick with ventilation control



Library of Things

Borrowing library for everyday equipment needs

Trip Shift

Data platform enabling business to green their operations

Construction Carbon

Net-Zero Carbon construction consultancy

Inuse-Reuse

Diverting materials from waste by upcycling and remaking

Thermulon

Sustainable mineral-based building insulation

Peddle My Wheels

Green transport initiative

Bioregional

A purpose-led sustainability consultancy

BioPhilica

Biodegradable leather alternative from plant waste



Packamama

Provide innovative, climate-friendly packaging for the drinks industry



The Remakery

Co-operative workspace for the circular economy

Propelair

A CleanTech company who manufacture the world's lowest water-flush toilet

Repowering London

Community-led renewable energy

Subak

Find, fund and scale organisations and individuals who are saving the planet

Entocycle

Transforming waste food into protein animal feed through Black Soldier Flies

Community TechAid

Charity diverting e-waste from landfill

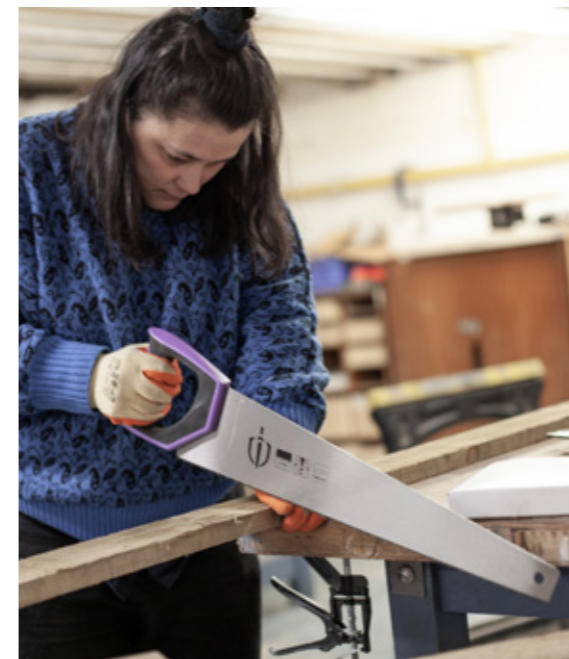
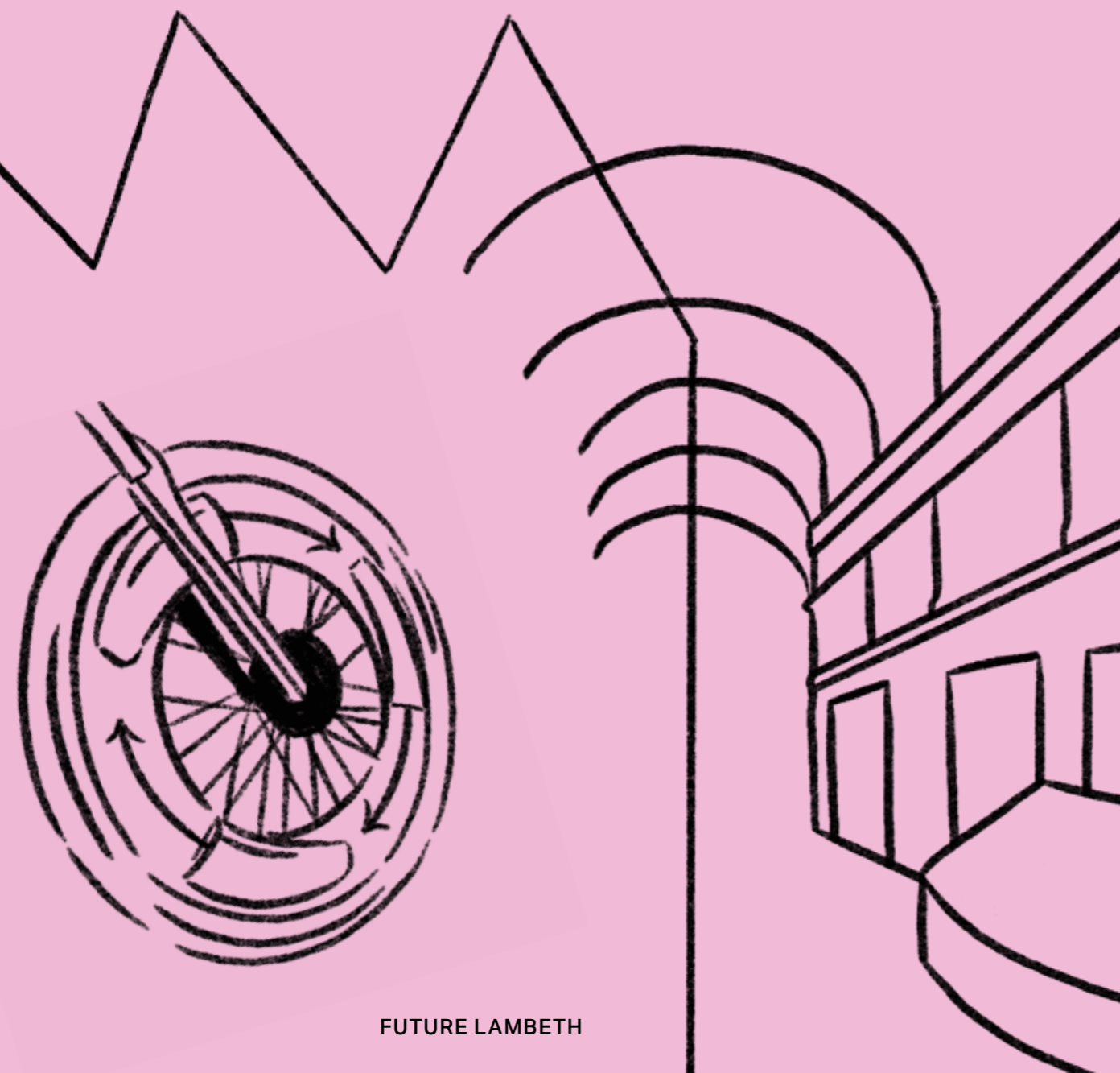


Our Vision

Lambeth will be known across London as the home to a green economy that leads the way in **research, innovation, and investment**. The sector will become mainstream within the local economy, deploying innovation for the benefit of our communities, and with a growing business base that spans all sizes and stages.

The sector will provide resilient and high-quality jobs with employment and skills pathways that enable residents of all backgrounds to participate in the green economy.

The council will be connected to stakeholders across the green economy ecosystem through strong partnerships that enable us to create the right environment for sustainable and inclusive growth within the sector. The borough will provide exemplar showcases of the sector's innovations that attract investment and support our commitment to becoming a net zero borough by 2030.



Left Image: Gorm Ashurst

GROWING OUR GREEN ECONOMY

Home to a
green
economy
that
leads the way
in
research,
innovation and
investment.





Our Plan

Across the next four years we will focus on five key areas to unlock growth in the green economy.

01 SPACE & CLUSTERING

We will grow workspace for the sector to encourage clustering.

02 FUNDING & INVESTMENT

We will unlock investment to develop and deploy innovation.

03 PARTNERSHIP & ADVOCACY

We will develop a strong business ecosystem and build Lambeth's identity as the home of the green economy.

04 BUSINESS SUPPORT

We will direct support to businesses at all stages of growth.

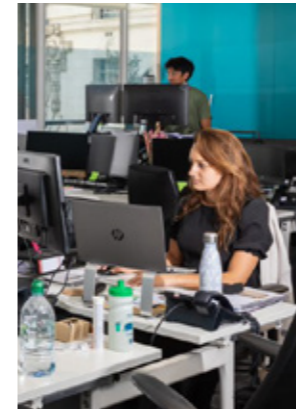
05 EMPLOYMENT & SKILLS

We will work with employers and educators to equitably grow our diverse talent.

01 Space & Clustering

High performance business communities and world-class centres of excellence for research and education are often located close to one another, creating an ecosystem where all the participants benefit from their proximity to each other and unleashing the potential for collaboration, knowledge-sharing and partnering.^[11] But access to affordable, supportive, and sustainable workspace to facilitate this co-location remains an ongoing challenge in London.

Lambeth's green economy is heavily dominated by micro enterprises (0-9 employees). These businesses need affordable space to seed and grow, co-locate, collaborate, and trade with each other – as can be seen at the Sustainable Ventures cluster in Lambeth where 86% of the 80 SMEs operate under business-to-business models.



In the coming decade, however, Lambeth has the potential to see over 6 million sq. ft of commercial office space^[12] delivered through the pipeline across Waterloo and South Bank, Vauxhall, and Brixton. With much of Lambeth's existing stock over 20 years old, this huge pipeline of Net Zero and grade A office space will be truly transformational for enabling growth in our priority sectors. Lambeth also continues to support innovation and foster business growth with a **pipeline of 332,766 sq. ft of affordable workspace** supported through ambitious planning policies and investing in the largest start-up space for sustainable businesses in Europe — Sustainable Ventures at County Hall.

Between 2001 and 2020, Lambeth has experienced a 31% loss (over 30 hectares) of its industrial land supply^[13] - a source of low-cost space that is vital to help entrepreneurs grow and pilot their product ideas, particularly at the start of their journey. While Lambeth seeks to intensify its stock of 48 hectares of industrial space, suitable space remains scarce for businesses manufacturing low carbon products - who we risk losing to other locations further afield.

By unlocking workspace for green businesses across the many different sub-sectors within the green economy we will help the sector to thrive and grow.

“All initiatives are valid and only businesses not asking questions of their impact are negative. Small steps taken by many are the way forward.”

The Remakery

ACTIONS being taken for Space & Clustering

01 Invest in a broad typology of workspaces

We will invest in a broad typology of workspaces that support green businesses through our Future Workspace Fund, increasing the provision of affordable space dedicated to the sector and working with operators to ensure our borough's workspaces are inclusive and representative of Lambeth's diversity.

02 Affordable Workspace Policy

We will use our Affordable Workspace Policy and partnerships with approved and experienced providers in the borough to connect green businesses directly to low-cost space secured through the planning process.

03 Encourage Sustainable Construction

We will encourage sustainable construction and design practises in terms of building standards through the Local Plan, creating income generation opportunities for businesses in the green economy.

04 Promote the Borough's Industrial Areas

We will promote the borough's Key Industrial Business Areas for green uses, such as waste management and small-scale green economy production businesses, working to connect owners of industrial property with green business tenants.

05 S106 Affordable Workspace Payments in Lieu

We will use S106 Affordable Workspace payments in lieu to secure and fund research facilities for the green economy and will encourage the inclusion of research facilities in schemes across the borough.

06 Green Economy 'Anchors'

We will work with developers and owners of large-scale office buildings to attract big businesses and green economy 'anchors' to major new development schemes in the borough.

07 Pipeline of Grow-On Space

We will work with developers, investors, and landowners of office buildings to ensure there is a suitable pipeline of grow-on space to retain our green businesses in the borough as they scale up.

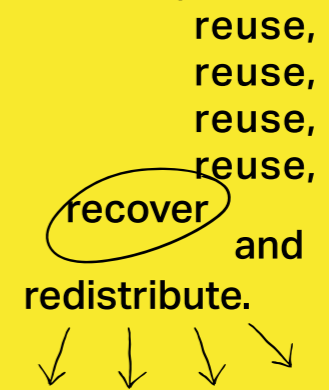


Established in 2012, The Remakery is a co-operative workshop and hot desk space in Brixton providing space for 40 users and 15 resident businesses who make up a community of makers, artists, local residents and enterprises working with surplus materials.

The impact of the neighbourhood focused space goes beyond the provision of interesting workspace - having converted underused garages beneath a housing block into thriving workshops. The Remakery also nurtures new skills, enabling ecological innovation and exploration of zero waste systems.

The Remakery has supported a broad range of projects where smaller businesses and individuals can flourish by building relationships with more established businesses and supported their entrepreneurs to further decarbonise their business operations.

As a community, they look to Rethink,



02 Funding & Investment

The right type of investment at the right phase of a business' journey is integral for unlocking innovation potential and business growth. 'Hardware' businesses, such as those in energy, food, agritech and mobility, experience particular challenges in raising necessary investment to grow as the majority of investment is channelled towards 'software' businesses which are seen as less risky by investors. This is a key constraint for the sector and Net Zero ambitions as climate change cannot be solved through software and services alone.

Entrepreneurs from backgrounds underrepresented in the sector face an additional challenge. Most low carbon SMEs receive grant, equity, and loan funding through a combination of Private Equity, Venture Capital, and crowdfunding sources. The top 5 Lambeth-based companies in terms of funding raised have secured amongst them a total of £290 million. But research by the [British Business Bank](#)^[14] found that entrepreneurs from Black, Asian, and other ethnic minority backgrounds receive less investment and experience lower success rates in their ventures. **Less than 1% of venture capital funding goes to all-women teams and only 1.7% of investments made at the seed, early and late-stages go to all-ethnically diverse teams.**

Beyond increasing investment in the sector, there is great opportunity for institutions to redirect existing budgets towards spend in the green economy. There is significant potential for added value for our businesses and residents from green interventions, which demonstrate the higher return on investment.

For example,

- Delivering place-based investments is estimated to deliver over £12,000^[15] in societal benefits per person over the next 30 years.
- Potential savings in health care alone from reduced pollution, noise etc. are worth £424 per resident^[16].

Lambeth can lead and support the borough's anchor institutions to channel their spending power towards the green economy, legitimising the sector and growing its market share. We will focus our efforts to increase funding and investment in the sector equitably to address these disparities, using our institutional leverage to collaborate with local partners to support and strengthen funding bids. By unlocking new funding opportunities through a broader set of investors, we can support the acceleration of the green economy whilst also supporting diverse entrepreneurs.



ACTIONS being taken for Funding and Investment

01 Establish a Lambeth Co-Investment Fund

We will explore opportunities to establish a Lambeth Co-Investment Fund and examine how this can mirror successes in supporting the green economy seen within the London Co-Investment Fund.

02 Encourage Increased Collective Spend

We will work with anchor institutions in the borough to encourage increased collective spend within their supply chains on green businesses.

03 Green Focussed Investment Opportunities

We will support and promote green focussed investment opportunities in Lambeth, including the Sustainable Ventures forthcoming £100 million venture capital fund.

04 Lobby Central Government

We will lobby Central Government to introduce measures that will support the growth of the green economy, for example removing VAT from low carbon activities.

05 Financial Incentives

We will encourage services across the council to review opportunities to provide financial incentives for green businesses and everyday economy businesses that decarbonise their activities, such as business rate relief and waiving licensing fees.

06 Collaborate with other Local Authorities

We will collaborate with other Local Authorities across London to pool resources, develop cross-borough partnerships and share best practice on how we can support the growth of the green economy.

07 Create Innovation Communities

We will continue to support the creation of workspaces, like Sustainable Ventures in County Hall, that create innovation communities and unlock research and development funding to support sector growth.

08 Develop and Strengthen Funding Bids

We will collaborate with green stakeholders to develop and strengthen funding bids and support green businesses to understand and demonstrate their impact, both socially and economically.

09 Secure Corporate and Philanthropic Sponsorship

We will work with green businesses to fundraise and secure corporate and philanthropic sponsorship.

10 Increase Foreign Direct Investment

We will seek to increase foreign direct investment into the green economy in partnership with the Department for Business and Trade, and London and Partners.

Innovation Matchmaking

Lambeth's Economic Resilience Fund brought forward **£2.4 million of funding opportunities in 2022**, focussing on the council's priority growth sectors. A pioneering project that was backed by this fund is Sustainable Ventures' Net Zero Innovation Challenge.

Large established organisations are facing tough challenges to reach net zero and SMEs based within Lambeth have the expertise to help address them. The Innovation Challenge pairs Lambeth's established businesses with sustainability innovators to support them to take practical and ambitious approaches to solving net zero challenges.

Through this programme five collaborations have taken place, responding to sustainability challenges set by the National Theatre, Hampton by Hilton, Southbank Centre, King's College Hospital NHS Foundation Trust and Urbanest. Innovators Propelair, Verv, Junee, Airex and Lightfi have partnered with these larger organisations to share knowledge, explore trials, and establish commercial solutions with the potential to scale their interventions.

The collaborations will help to support low carbon buildings, waste and the circular economy, behaviour change, and low carbon mobility. They also showcase the wealth of climate action innovation that Lambeth has to offer and enable our borough's institutions to invest in local low carbon businesses.

A second round of the Innovation Challenge will launch in 2024 to support further collaborations between Lambeth's major employers and climate tech start-ups.



03 Partnerships & Advocacy

We want to position our borough as the best place to base a green enterprise, offering a supportive business environment and a skilled talent pool. The expanding low carbon cluster at Sustainable Venture comprises multiple technologies across over 150 businesses with a strong competitive advantage in Climate Tech - Europe's fastest growing start-up segment. This cluster alone has **raised over £500 million in follow-on funding, created 1,250 jobs, and enabled a 95% company survival success rate.** This extremely high success rate for start-up and scale-ups is largely due to the specialist support and advocacy offered via the ecosystem community.



4
5

“There is a lot of opportunity for growing the Low Carbon Sector but there is potentially a lot of crossovers. Several organisations are working towards the same goal, so networking is important and valuable.”

Community TechAid

Greening our economy requires interdisciplinary and systemic thinking to tackle the vast complexities of the problem. Lambeth has a unique opportunity to establish cross-sector links, bringing in expertise and knowledge from the borough's thriving creative, life science, and digital sectors to contribute to the mission. Projects such as the 'Science Gallery' - King's College London's flagship public-facing facility connecting art, science, and health to foster innovation – show how connections can be made across academia, industry, arts, and sciences. There is great value that the creative and digital industries can bring to amplifying the net zero mission through its approach to engagement, advocacy, and identity building.

The net zero agenda needs leadership and coordination at a local level to bring diverse stakeholders together around a shared ambition and carve out new opportunities for green businesses to respond. Through carefully framed narratives, government can communicate to a broad range of stakeholders, from grassroots movements to social entrepreneurs to incumbent, large businesses to get involved.

We can advocate for and celebrate the achievements of our green economy on a city-wide, national, and international stage. And additionally, we must celebrate the achievements of businesses in all sectors decarbonising their operations, setting best practice for others to follow. Our anchor institutions can showcase and share best practice around the steps they are already taking to decarbonise - with the National Theatre reducing its reliance on mains water by 50% since 2011, and King's College London reducing their scope 1 and 2 emissions by 53% since 2005-06^[17].

ACTIONS being taken for Partnerships & Advocacy

01 Green-Focussed Networks

We will create and convene green-focussed networks to enable connections between our anchor institutions, big businesses, academics, start-ups and scale-ups, and green businesses in the borough to enable sharing of best practice.

02 Cross-Sectoral Collaboration and Innovation

We will explore opportunities to connect green businesses with organisations in our other priority sectors of the creative and digital industries and life sciences to enable cross-sectoral collaboration and innovation on green opportunities.

03 Address the Systemic Barriers to Decarbonising

We will build on the momentum of the Innovate UK funded Net Zero Pioneer Places project to develop projects that address the systemic barriers to decarbonising our borough, bringing together industry, innovators, academia, and communities in developing solutions.

04 R&D Funders

We will host events that bring R&D funders and our green economy together to encourage cross-sector collaboration and bridge the gap in shaping and accessing investment opportunities.

05 Attract Major Investment and Occupiers

We will advocate for the green economy in our inward investment activity and positioning of the borough at a regional, national, and global level (e.g. with a presence at real estate and industry forums) to attract major investment and occupiers.

06 Actively Target Green Occupiers

We will actively target green occupiers through the Lambeth Now platform to increase the number of green businesses trading within Lambeth.

07 Showcase Lambeth as a Home for the Sector

We will deliver the South Bank and Waterloo 'zero-carbon neighbourhood' pilot, providing a case study to showcase Lambeth as a home for the sector and a model for other neighbourhoods to decarbonise.

08 Testing and Piloting of R&D Projects

We will position Lambeth as a place for testing and piloting of R&D projects, using our own carbon reduction challenges as a test bed, and through initiatives such as the Net Zero Show Home.

09 Support the Legitimacy of the Green Economy

We will support the legitimacy of the green economy by using council comms channels to actively shape a narrative around the green economy and showcase innovation happening within Lambeth.

Supporting Growth in the Green Sector

and Beyond

With wide-ranging services delivered by the council, Lambeth can partner with early-stage green businesses to test and platform their innovations through local pilot programmes. This work is already underway within the borough.

Wasted is an innovative start-up that aims to address the 'yuck factor' with food waste recycling. They are currently designing a retrofit lid for kitchen food waste bins that dehydrates the contents by up to 50%, thus helping address common barriers to food recycling like unpleasant smells and bin juice. Currently, 18% of household waste is food waste, with only 2.2% actually collected by local authorities. By making the process more hygienic, it will encourage positive behaviour change, increase recycling rates, and help create a more circular food system.

Wasted was awarded funding from Innovate-UK to further develop and trial its technology in collaboration with Lambeth. Recruiting Community Champions through Lambeth's network, Wasted ran a four-week pilot with 10 households across the borough and also a co-design workshop with the trial participants. The feedback gathered through this process is fundamental in shaping the future design of the product to ensure it best meets the needs of users and enables more households to recycle food and reduce waste-to-landfill.

The impact of the pilot has reached beyond the Community Champions and is supporting other businesses in the borough; Wasted worked closely with Embedism, an electronics and design studio in Brixton, during the design and manufacture of their pilot product. Supporting green businesses, such as Wasted, not only helps them trial their product across the borough, but it also enables connections with other businesses, such as Embedism – demonstrating how growth in the green economy can bring benefits and opportunities that reach beyond the sector itself and benefit the borough's economy more widely.

04 Business Support

High growth, knowledge intensive sectors thrive on a strong start-up ecosystem. With access to the right support, early-stage green businesses can develop their concept, test their products and services, raise investment and gain access to the market. From the borough's most carbon-intensive companies to the everyday economy businesses, tailored advice and resources will need to be available to businesses at all stages of their net zero journey.



As we approach Net Zero 2030 and societal expectations for a green economy grow, businesses across all sectors must respond to an increase in demand for sustainable goods and services by taking action to set Net Zero targets, incorporating sustainable practices into their supply chains, and adapting their existing goods and services. However, reports by [Small Business Britain](#)^[18] and the [British Chamber of Commerce](#)^[19] have found that up to 96% of small businesses don't fully understand what the Government's Net Zero targets mean for them. With 99% of Lambeth's enterprises being either micro, small or medium-sized, it is essential that we continue to develop and deliver business support programmes, incubators and accelerators targeting these stages and supporting them to **understand and meet their Net Zero aims**. We can coordinate and connect businesses into greener alternatives, such as shared electric delivery vehicles, to create growth opportunities for green businesses that support the decarbonisation of our economy as a whole.



In order to stimulate the retrofit sector, for example, tailored support is needed to enable local businesses to seize opportunities in green construction and retrofit. Supplier readiness is a significant constraint^[20], with a lack of SMEs and installers with retrofit and green energy experience, and the required certification and Trustmark accreditation. Support is needed to ensure that Lambeth's businesses attain the necessary accreditation to be able to respond to the growing demand for green goods and services.

The council also has a unique opportunity to showcase green innovation through its own portfolio of sites and services, as well as incentivising greener operations within its own supply chain.

As programmes such as the Net Zero Innovation Challenge have shown, the council has an opportunity to steer innovation in ways that respond to borough needs. Smaller and early-stage businesses also need support and routes into the supply chains of larger institutions and established businesses. This can be transformative for green goods and services gaining a greater market share and growing the borough's economy.

“The Sustainable Ventures bootcamp allowed us to hear solutions that people have come up with and relevant or not, hearing stories is very useful.”

VAULT Festival

ACTIONS being taken for Business Support

01 Provide Business Support

We will continue to work with organisations like Sustainable Ventures and Startup Discovery School to provide business support to existing businesses and green start-ups in Lambeth, and those committed to decarbonising.

02 Target Businesses with Large CO2 Emissions

We will target businesses with large CO2 emissions in the borough and promote business support programmes around decarbonisation to increase activities within the green economy.

03 Council's Procurement Processes

We will review and adapt the council's procurement processes to drive adoption of greener policies for supply chain businesses.

04 Navigate Procurement Processes

We will provide support to emerging green businesses on how to navigate procurement processes to increase their customer base.

05 Green Business Directory

We will explore the development of a green business directory for Lambeth, increasing the visibility of the sector and growing local supply chains.

06 Test and Trial New Green Solutions

We will fund programmes like the Sustainable Ventures Innovation Challenge to connect green SMEs to established businesses in the borough to test and trial new green solutions and focus innovation activity to the areas of highest potential in emissions reduction - living car free, refurbishing buildings, heat pumps, and renewable electricity.

07 Share Insights with Industry

We will share insights with industry from the council's own data to identify where innovation is most needed.

08 Develop Decarbonisation Plans

We will work with industry specialists to develop decarbonisation plans for sectors within the everyday economy (such as retail and hospitality) to help more businesses participate in the green economy.

09 Increase Accreditation

We will provide support and mentoring to SMEs to increase accreditation with schemes such as the Government mandated certifications for retrofit and schemes such as the 'Zero Waste to Landfill' certification.

10 Explore Collaboration Opportunities

We will explore collaboration opportunities to grow Lambeth's green economy with central government departments concerned with trade, energy, innovation and technology, and net zero.

Diversifying the sector

Lambeth's Economic Resilience Fund Round 3 was designed to fund projects that deliver large scale pandemic response business support and contribute to the delivery of the business action plan of the [Economic Resilience Strategy](#)^[21] across three themes of support – priority growth sectors, diverse business communities and town centres and high streets.

Over a three-year lifespan, the Fund is forecast to directly support over 900 businesses and support around a further 4,000 businesses indirectly.

In 2022 Startup Discovery School partnered with Capital Enterprise and Lambeth Council to launch and run the Lambeth Net Zero Programme. The programme is an innovative six-month accelerator that offered 10 promising start-ups the opportunity of direct support and a grant of £5,000 to support business founders to get their ideas off the ground and break into the Lambeth market.

The Net Zero Programme specifically sought to increase the diversity within the green economy and bring new perspectives into the industry, which it has seen a huge success in achieving. Of the 10 start-ups involved in the programme, 50% were female-led businesses and 30% led by a person from a Black, Asian, or Minority Ethnic background. The 10 start-ups also ranged across the key net zero themes of Waste Culture and Management, Air Pollution, Renewable Energy, Retrofitting Buildings, Low Emission Vehicle, Plastic Reduction and Sustainable Living.

Given the success of the programme, a second Net Zero Accelerator Programme is now being designed, and Startup Discovery School continue to scale up their work to support business across Lambeth, Islington, and Camden.

Lambeth has a huge opportunity to grow the green economy and the Net Zero Accelerator highlights the wealth of local, diverse net zero innovators that Lambeth has to offer.



05 Employment & Skills

Local government can serve as a matchmaker between the demand and supply of critical skills by collecting and diffusing the necessary information as well as providing pathways for training, jobs, and life-long learning.

Lambeth is more ethnically diverse than London as a whole and has a relatively young population with a growing number of people aged between 20-44. However, the pandemic exacerbated existing structural inequalities within the labour market, meaning that Black, Asian, and multi-ethnic, young, and disabled residents all face **disproportionate disadvantages in economic terms**. It is essential that as we grow the borough's green economy, we ensure that employment and skills programmes seek to address the inequity of the labour market to enable a just transition.

Research shows^[22] that the economy's transition towards sustainability increases workers' efficiency, largely through a greater share of knowledge intensity and innovative ways of working to deal with the complexity that sustainability brings with it. The knowledge intensity and skills levels of the green economy is reflected in higher job security and higher pay for green jobs than non-green jobs (approx. £93 per week higher).

“What Lambeth has is an amazing network of people that care, and network of activists which other places don't have.”

Library of Things



Considerable potential lies in jobs in finance, consulting and other knowledge economy areas which provide an unprecedented opportunity to drive human capital upgrades in the borough through the low-carbon economic transition. A growing base of green SMEs in the borough also fuel a demand for jobs to meet various business functions, such as accountancy, HR, and office management.

Careers in retrofit, green energy and Net Zero buildings are relatively new and awareness among young people is low. Lambeth can broker introductions to schools, Further Education colleges and youth organisations and encourage contractors working in these areas to proactively engage to **help build awareness, understanding and interest in these sectors**. By showcasing diverse career pathways and sharing an understanding of the typical roles in these key green sectors, contractors will help to build a supply of interested candidates in the sector. We can build on the success of the ELEVATE programme^[23] in creating pathways into the creative industries for Lambeth's young people, to break down barriers and ensure that young people in the borough are inspired to take up careers in the green economy.

Through this targeted support we can empower Lambeth's residents to find employment, upskill or reskill, and build more financially resilient communities.

ACTIONS being taken for Employment & Skills

01 Build Partnerships with Green Employers

We will build partnerships with green employers within the borough to foster ideation, experimentation, and investment in green skills.

02 Map Routes into Employment

We will work with further and higher education providers in the borough to map routes into employment within the green economy, particularly focussing on those from disadvantaged and underrepresented groups, and create a pipeline through from lower levels of learning to employment.

03 Source Funding for Employment and Skills Programmes

We will source funding for employment and skills programmes that specifically target the green economy and offer a net zero compatible curriculum.

04 Targeting Entrepreneurs in the Green Economy

We will work with partners at King's College London's Entrepreneurship Institute to promote and deliver programmes specifically targeting entrepreneurs in the green economy.

05 Work with Employers in the Construction Industry

We will work with employers in the construction industry to increase jobs focussed on delivering green alternatives – increasing employment opportunities in the areas with the largest opportunity to mitigate and reduce carbon emissions.

06 Green Focused Skills Academies

We will engage with industry partnerships and corporate sponsorship opportunities to support the delivery of green focused skills academies, like London South Bank University's Green Skills Hub, to accelerate employment and skills in areas such as retrofit.

07 Engage Education Institutions

We will engage education institutions across Lambeth to develop careers pathways and raise awareness amongst young people of the careers that the sector can offer.

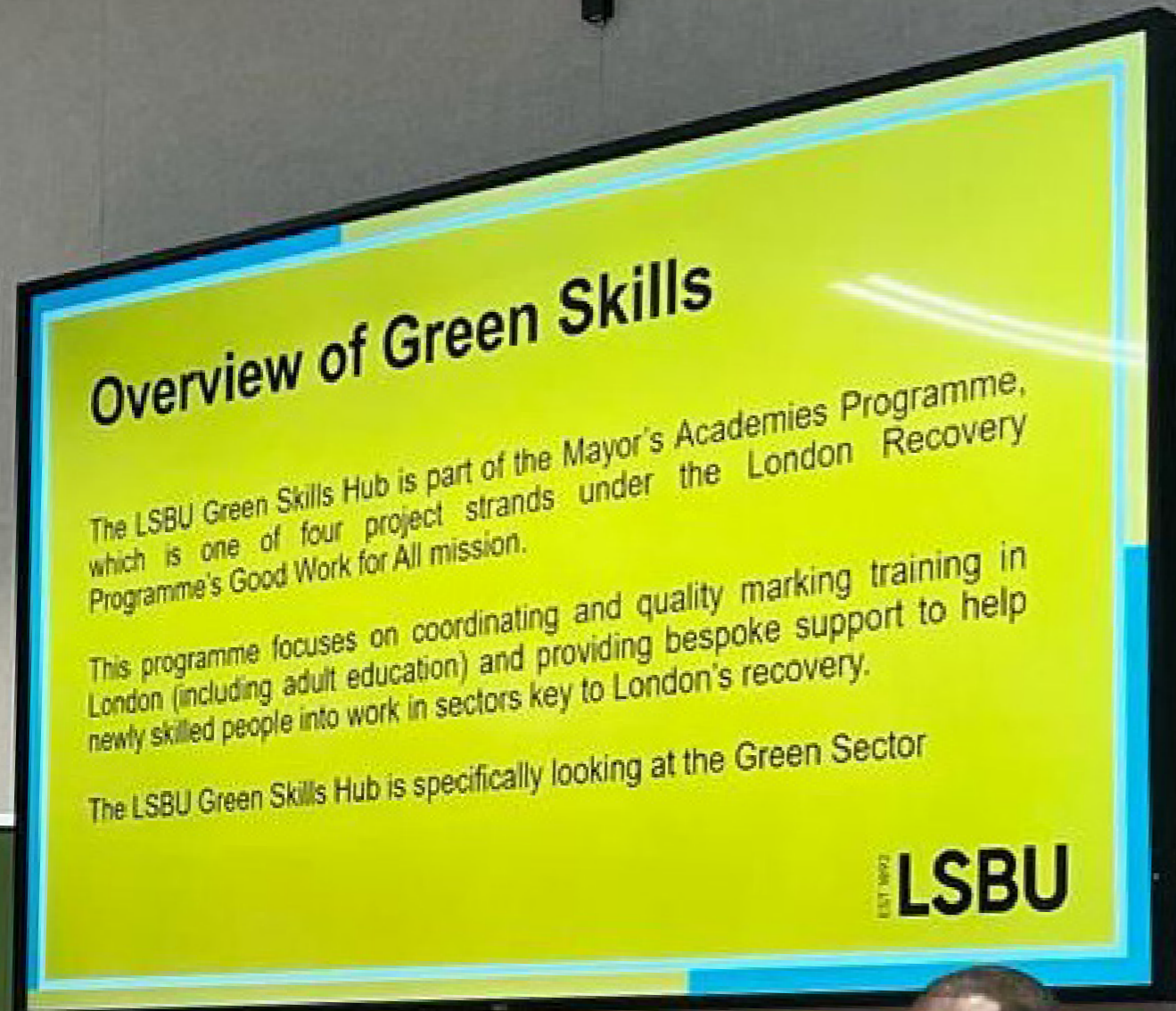
Tri- borough Green Skills Hub

Lambeth along with neighbouring councils of Lewisham and Southwark are active strategic partners in the [LSBU Green Skills Hub](#)^[24], part of the [Mayor's Green Academy](#)^[25]. The funding establishes and resources the coordination hub, bringing together both local skills delivery partners, including the Southbank Colleges, and local construction and energy employers.

Together our boroughs are working in partnership with contractors to achieve the goals of the LSBU Green Skills Hub and to support its local skills delivery partners through tailored opportunities in the construction industry.

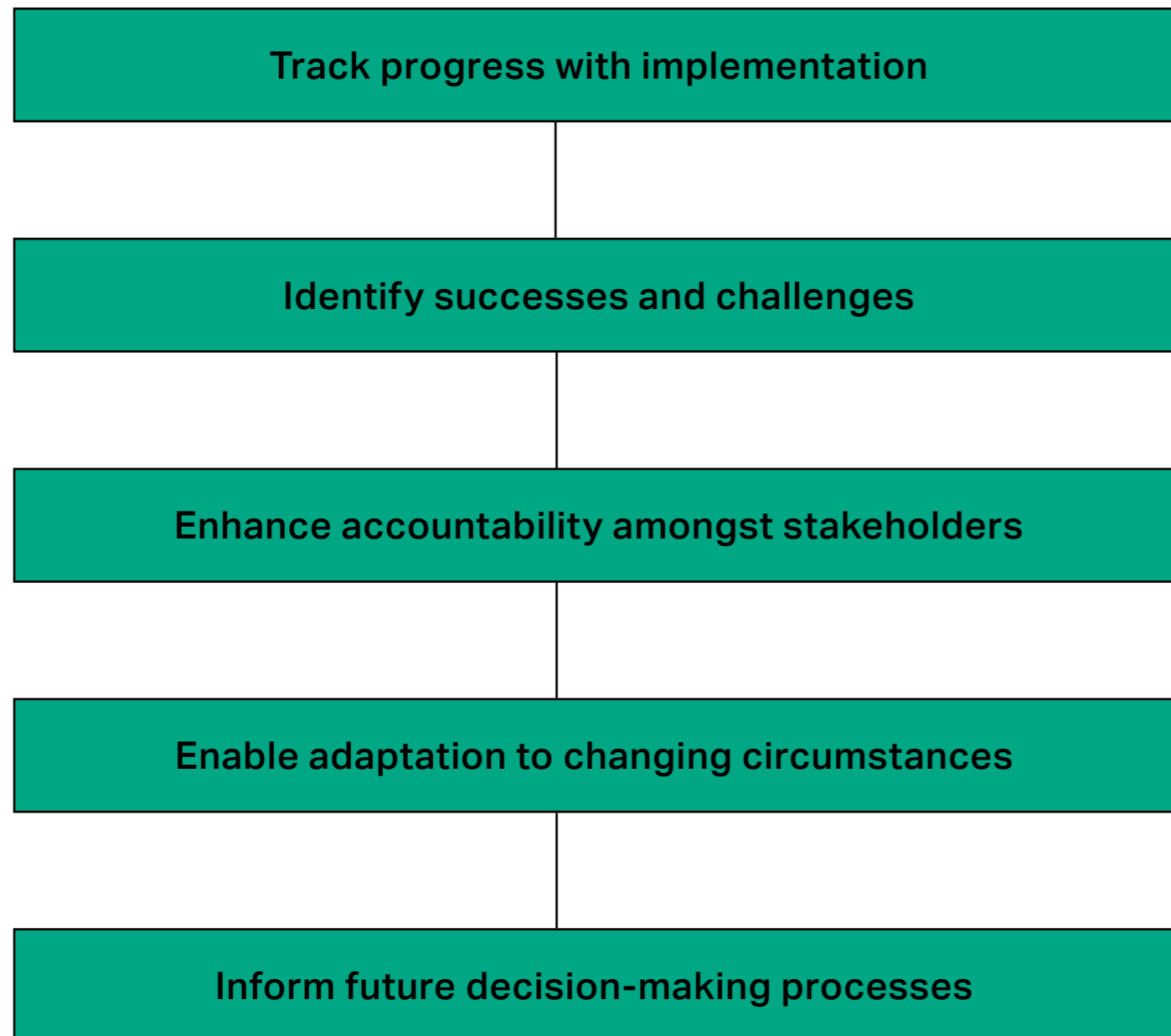
The Hub aims to lead on the move to the green economy and net zero with a focus on the skills needs of the residents and businesses of the tri-boroughs.

The project aims to provide support for 11 partner and 50 new employers to be embedded within the project, provide 382 jobs/ apprenticeships and 119 work placements, reach 1,230 qualifications provided and six new qualifications implemented, and launch a programme of sector-specific marketing and engagement, growing the pipeline of talent, including Apprenticeships and Jobs Fairs, schools programme, employer workshops.



Measuring Our Impact

To ensure that our vision of becoming the home of a green economy that leads the way in research, innovation, and investment, it is necessary to put in place a monitoring framework that will:



Behind the Green Economy Growth Strategy sits a monitoring framework with clear metrics and targets. The monitoring framework contains key performance indicators for each individual action within the strategy. These include measures specifically focusing on social value and equities, such as the number of courses and apprenticeships relating to the sector and monitoring of the gender pay gap, as well as more general economic benefits which look at aspects such as the impact on jobs and investment in the sector. The impact of the strategy will also be assessed more broadly by monitoring the overall growth of jobs in Lambeth's green economy the contribution to Gross Value Added, and the reduction in carbon emissions, as well as how these impacts are distributed within the borough.

Annual performance reviews of these indicators will be undertaken to monitor progress, ensure accountability and identify any new actions needed to achieve the desired outcomes. The annual review will also serve to provide a basis for improving the delivery of the strategy, focus future activities and inform future partnership agendas, as well as policy and strategy development. Alongside this monitoring, evaluation will be put in place. We feel evaluation is an important step to allow us to obtain rich qualitative data to improve the delivery of the strategy, to refine future activities and help inform future partnership working, policy and strategy development.

Glossary

AGRITECH

Agricultural technology is the use of technology in agriculture, horticulture and aquaculture with the aim of improving sustainability, efficiency and profitability.

C02eq

Carbon dioxide equivalent is a metric measure used to compare the environmental impact of one tonne of a greenhouse gas in comparison to the impact of one tonne of carbon dioxide.

CIRCULAR ECONOMY

An economic system based on the reuse and regeneration of materials or products, especially as a means of continuing production in a sustainable or environmentally friendly way.

CLEANTECH

Clean technology refers to companies and technologies that aim to improve environmental sustainability.

CLIMATE CHANGE

A change in the ecological average conditions – such as temperature and rainfall – in a region over a long period of time. Globally, climate change has resulted in increasing temperatures, rising sea levels and changes to weather patterns. In Lambeth the main impacts of climate change are likely to be warmer, wetter winters, hotter, drier summers, more frequent extreme rainfall events, leading to greater risks of flooding and greater air pollution.

GREEN ECONOMY

Economic activities, including the production of goods or the development of services, that are low carbon, resource efficient and socially inclusive. It includes things like renewable energy, sustainable construction, green finance, low carbon transport and other activities that seek to reduce ecological and climate impacts.

INNOVATION

The process of bringing about new ideas, methods, products, services, or solutions that have a significant positive impact and value.

LAMBETH CLIMATE ACTION PLAN

Lambeth's response to the climate and ecological emergency and to what our communities have asked for. The Plan sets out how, as a local authority, we can play our part in reducing emissions and improving climate resilience.

LOW CARBON

Causing or resulting in only a relatively small net release of carbon dioxide into the atmosphere.

LOW CARBON ENVIRONMENTAL GOODS AND SERVICES (LCEGS)

Products and services from across the economy, which actively enable a shift towards a green economy. The sector is considered an 'umbrella' sector, counting products and services from those sectors which can reduce carbon emissions and improve the environment.

NET ZERO

A point that is reached when overall emissions are zero, through prioritising the reduction of emissions and compensating for any residual emissions through offsetting activities.

RETROFIT

Adding or upgrading components of a building to improve its performance. This typically includes adding insulation, upgrading windows and other aspects of the building shell, upgrading or replacing the heating system and lighting/appliances.

SUSTAINABILITY

Meeting our own needs without compromising the ability of future generations to meet their own needs.

References

- 01 https://kmatrix.co/wp-content/uploads/2021/08/kMatrix_LCEGS_UK_2007_08_to_2020_21_with_forecast_2025_26_final.pdf
- 02 <https://www.london.gov.uk/coronavirus/londons-recovery-coronavirus-crisis/recovery-context/green-new-deal>
- 03 https://www.lambeth.gov.uk/sites/default/files/2023-03/Lambeth_2030-Our_Future_Our_Lambeth.pdf
- 04 Ivanova, D. et al (2020). Quantifying the potential for climate change mitigation of consumption options. Environmental Research Letters, 14, 9.
- 05 <https://www.mckinsey.com/featured-insights/diversity-and-inclusion/diversity-wins-how-inclusion-matters>
- 06 <https://www.lambeth.gov.uk/sites/default/files/2022-07/state-of-the-borough-2022-report.pdf>
- 07 IEMA, 2021. Careers and Skills Impact Assessment. <https://www.iema.net/download-document/236731>
- 08 PwC, 2021. Number of women at the top of the UK energy sector rises. <https://www.pwc.co.uk/press-room/press-releases/number-of-women-at-the-top-of-the-uk-energy-sector-rises-.html>
- 09 Parity Projects, 2021. Pathways Report, Lambeth Summary.
- 10 Central London Forward, 2022. Green Jobs & Skills. <https://centrallondonforward.gov.uk/wp-content/uploads/2022/03/CLF-green-jobs-and-skills-Final.pdf>
- 11 <https://www.cbi.org.uk/what-we-do/seize-the-moment/a-regionally-thriving-economy/cbi-clusters-playbook/>
- 12 Sustainable Space. Flexible Futures. Lambeth: The Future of Sustainable Work report (2022)
- 13 <https://data.london.gov.uk/dataset/london-industrial-land-supply-study-2020>
- 14 British Business Bank: 'Alone, together: Entrepreneurship and diversity in the UK' (2021)
- 15 All-Party Parliamentary Group on Sustainable Finance: Introductory Guide to Green Finance
- 16 Royal College of Physicians: Reducing air pollution in the UK: Progress report (2018)
- 17 Lambeth's Climate Action Plan
- 18 <https://smallbusinessbritain.uk/sustainability-basics-research>
- 19 <https://www.britishchambers.org.uk/news/2023/02/action-on-net-zero-held-back-by-lack-of-understanding>
- 20 Parity Projects, 2021 – London Councils: Pathways Report
- 21 https://love.lambeth.gov.uk/wp-content/uploads/2022/02/102061_EconomicResilienceStrategy2_Feb22_acc.pdf
- 22 https://www.london.gov.uk/sites/default/files/identifying_green_occupations_-_working_paper_99.pdf
- 23 ELEVATE programme
- 24 LSBU Green Skills Hub
- 25 Mayor's Green Academy

Get Involved

This strategy has been developed through engagement with the borough's green economy stakeholders, and it is the ambition that this strategy shapes a partnership which can promote the sector and together deliver on the action plan.

We would like to thank all of the stakeholders that have participated in the development of the strategy and look forward to continuing to work in partnership moving forward.

Our strategy will have the greatest impact if we continue to deliver it through close collaboration and partnership with Lambeth's green economy stakeholders. Help us shape the growth of Lambeth's green economy by getting in touch:

invest@lambeth.gov.uk

www.lambethnow.co.uk

LAMBETH.
NOW'S THE TIME.